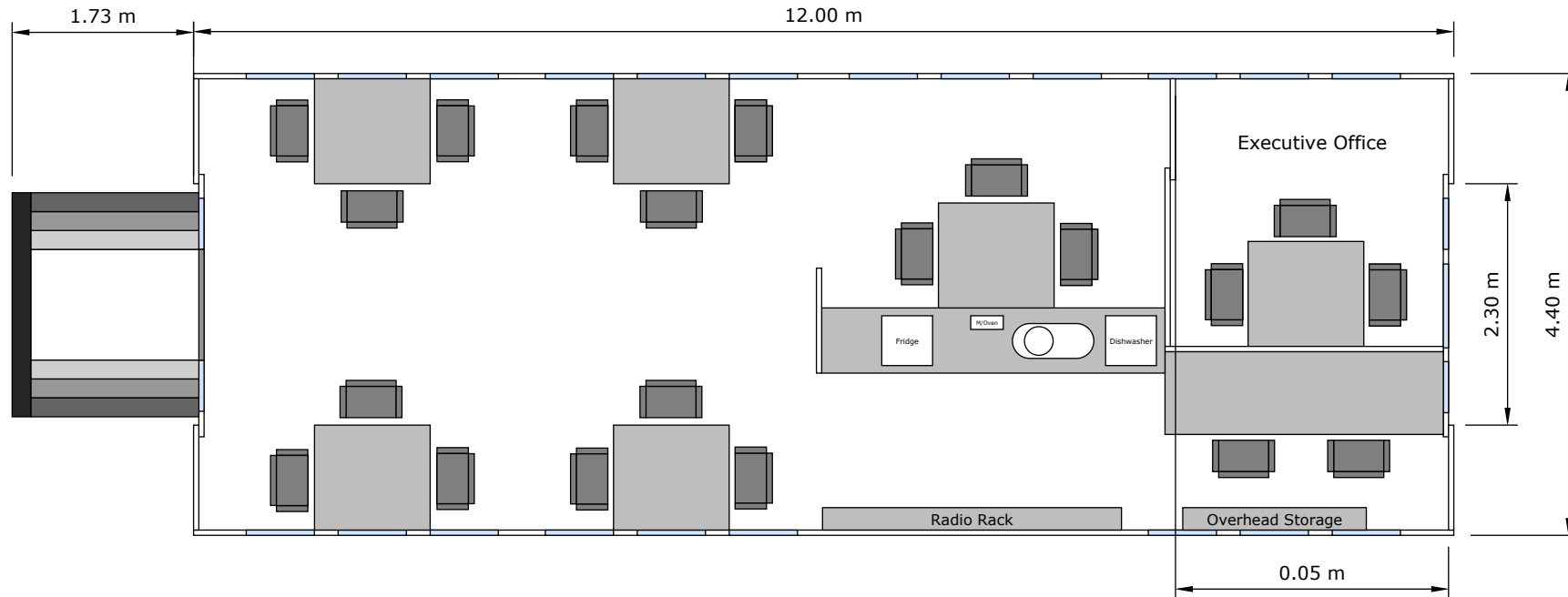


# PRODUCTION OFFICE 20 POSITION P06-9 FLOORPLAN



T: +44 (0)1763 244886 F: +44 (0)1763 244663 W: on-set.com E: info@on-set.com

**On-Set Location Services Ltd, Brook Orchard, Brook Road, Bassingbourn, Herts SG8 5NS**

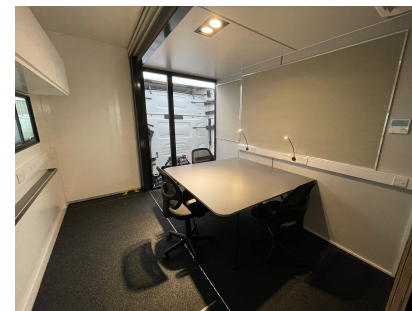
Registered Office: Gregory Wildman, The Granary, Crowhill Farm, Ravensden Road, Wilden, Beds, MK44 2QS. Company Registered in England N° 2631070 VAT N° 595 1309 26

Directors: NS Howard & CS Howard. Member of Transport Administration. O License Registration No OF 219465

# PRODUCTION OFFICE 20 POSITION P06-9



65 sq.m Office Space.  
Seperate Executive Office.  
Fully Heated and Air-conditioned.  
4m Kitchen with appliances.



T: +44 (0)1763 244886 F: +44 (0)1763 244663 W: on-set.com E: info@on-set.com

**On-Set Location Services Ltd, Brook Orchard, Brook Road, Bassingbourn, Herts SG8 5NS**

Registered Office: Gregory Wildman, The Granary, Crowhill Farm, Ravensden Road, Wilden, Beds, MK44 2QS. Company Registered in England N° 2631070 VAT N° 595 1309 26

Directors: NS Howard & CS Howard. Member of Transport Administration. O License Registration No OF 219465